

# SAPPER

A.R.M.D.S (Autonomous Robotic Mine Delivery System)



September 2020 Product Sheet

Defence Through Innovation

## SAPPER

The SAPPER is an autonomous mine delivery system aimed at vehicles such as MBT, APC, IFV and Technicals

Sapper has the ability to identify and select high value target based on pre-configured parameters.

Delivering at a minimum an M-kill, without betraying the operator's position.

Utilising the pre-programmed swarm feature, multiple SAPPER systems can attack a target producing a C-kill.

## Economics of conflict.

Conflict is an expensive endeavor and is as much about economics as it is about achieving strategic goals, with a single Javelin command launch unit cost approximately **\$126,000**, and each missile cost around **\$111,000**, destroying a weaponized technical costing circa **\$30,000** is not an impressive return on investment.

SAPPER is a cost-effective method of achieving high value target neutralization and requires minimal training for all operators to be effective.

## Reduce post conflict impact.

Proliferation of mines in areas of conflict prove to endure long after operations have ceased but continue to claim lives across the globe on a daily basis.

The SAPPER only has kinetic capability during conflict and not in peace time, the financial cost attributed to demining operations are disproportionate to the costs of deployment of mines and as for the Human cost..... devastating.

SAPPER employs advanced technology, selective automation and intuitive interface to put a highly capable system at the fingertips of soldiers, increasing effectiveness of the war fighter whilst at the same time reduce risks to the communities in which they operate.

Figure 1 SAPPER A.R.M.D.S



Figure 2 TM-72 AT



Figure 3 M19 AT



Subject to change without notice.

## SYSTEM FEATURES

- Autonomous and remote control.
- Soldier operated via chest rig and android device
- Multiple kinetic payload options.
  - M19 AT
  - M21 AT
  - TM62 AT
  - TM72 AT
- Swarming capability, multiple SAPPER systems can swarm on a target to achieve C-kill.



Figure 4 Android control device

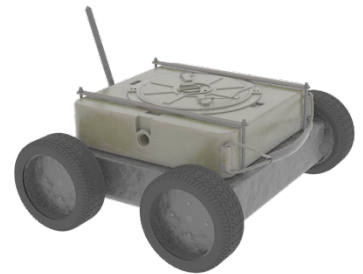


Figure 5 SAPPER mine delivery system

CHARACTERISTICS	
Power	12v dc
Battery	8ah x
Payload	20kg
Steering	Skid steer
Operational duration	30mins hot swap battery spare
Drive Camera	Yes
Control	phone-based app autonomous and teleoperation
Speed	>20kmh
GPS Interface	option
Target identification	Identification algorithm

WEIGHT & MEASURES (no payload)	
Weight	6kg
Length	L:600mm
Height / Width	H:172mm W:580mm



For further information please contact:

Baird Technology  
2/11 Exeter Way,  
Caloundra west, Queensland AUSTRALIA  
Tel: +61 (0)491 200 560  
Email: Enquiry@bairdtechnology.com

Subject to change without notice.

